

Satellite-based estimates of groundwater depletion in India

Matthew Rodell¹, Isabella Velicogna^{2,3,4} & James S. Famiglietti²

Groundwater is a primary source of fresh water in many parts of the world. Some regions are becoming overly dependent on it, consuming groundwater faster than it is naturally replenished and causing water tables to decline unremittingly¹. Indirect evidence suggests that this is the case in northwest India², but there has been no regional assessment of the rate of groundwater depletion. Here we use terrestrial water storage-change observations from the NASA Gravity Recovery and Climate Experiment satellites³ and simulated soil-water variations from a data-integrating hydrological modelling system⁴ to show that groundwater is being depleted at a mean rate of $4.0 \pm 1.0 \text{ cm yr}^{-1}$ equivalent height of water ($17.7 \pm 4.5 \text{ km}^3 \text{ yr}^{-1}$) over the Indian states of Rajasthan, Punjab and Haryana (including Delhi). During our study period of August 2002 to October 2008, groundwater depletion was equivalent to a net loss of 109 km^3 of water, which is double the capacity of India's largest surface-water reservoir. Annual rainfall was close to normal throughout the period and we demonstrate that the other terrestrial water storage components (soil moisture, surface waters, snow, glaciers and biomass) did not contribute significantly to the observed decline in total water levels. Although our observational record is brief, the available evidence suggests that unsustainable consumption of groundwater for irrigation and other anthropogenic uses is likely to be the cause. If measures are not taken soon to ensure sustainable groundwater usage, the consequences for the 114,000,000 residents of the region may include a reduction of agricultural output and shortages of potable water, leading to extensive socio-economic stresses.

Groundwater responds more slowly to meteorological conditions than the near-surface components of the terrestrial water cycle⁵. Its residence time (the ratio of quantity in storage to average rate of recharge or discharge) ranges from months in shallow aquifers to a million or more years in deep desert aquifers⁶. Hence, groundwater can be slow to recover from perturbations to its state of dynamic equilibrium. In particular, withdrawals can easily surpass net recharge in arid and semi-arid regions where people depend on fresh groundwater for domestic needs and irrigation¹. Despite the increasing pressure placed on water resources by population growth and economic development, the laws governing groundwater rights have not changed accordingly, even in developed nations⁷. Nor is groundwater depletion limited to dry climates: pollution and mismanagement of surface waters can cause over-reliance on groundwater in regions where annual rainfall is abundant.

India now suffers severe water shortages in many of its states. It averages about 120 cm yr^{-1} of precipitation, which is more than any other country of comparable size⁸, but the rain is unevenly distributed. In New Delhi, India's richest city, most middle-class residents do not have a dependable source of clean water (Sengupta, S., 'In

India, water crisis means foul sludge', New York Times, 29 September 2006). The World Bank has warned that India is on the brink of a severe water crisis⁹. Nationally, groundwater accounts for about 50–80% of domestic water use and 45–50% of irrigation^{8,10}. Total irrigated area in India nearly tripled to 33,100,000 ha between 1970 and 1999¹¹. In neighbouring Pakistan, which is largely arid, groundwater is essential for much of the country's agriculture. Competition for precious water in transboundary aquifers is likely to exacerbate already strained relations between the two nations.

India's government is aware that groundwater is being withdrawn at unsustainable rates in some areas, and in 1986 it established a Central Ground Water Authority with the power to regulate groundwater development¹². However, as in other nations composed of smaller sovereignties and encompassing competing interests that have become dependent on a certain level of water availability, it is difficult to implement a coordinated and appropriately stringent response. Political and aquifer boundaries bear no resemblance to each other, and aquifers themselves are interconnected, so that one state's (or country's) groundwater management practices are likely to affect its neighbour. Holistic regional groundwater assessments would be valuable in promoting appropriate policies and for hydrologic research, but such assessments are difficult to generate on the basis of well surveys, which are typically unsystematic.

The Gravity Recovery and Climate Experiment (GRACE) satellite mission, launched by NASA and the German Aerospace Centre (DLR) in 2002, measures temporal variations in the gravity field, which can be used to estimate changes in terrestrial water storage (TWS)³. Although its spatial resolution (no better than $\sim 160,000 \text{ km}^2$) and temporal resolution (ten day to monthly) are low in comparison with those of other Earth-observing satellites, GRACE has the major advantage that it senses water stored at all levels, including groundwater. Unlike radars and radiometers, it is not limited to measurement of atmospheric and near-surface phenomena.

Groundwater storage variations can be isolated from GRACE data given auxiliary information on the other components of TWS, from either *in situ* observations¹³ or land-surface models¹⁴. We used the second approach to produce a time series of groundwater storage anomalies (deviations from the mean state) averaged over the area encompassed by Rajasthan ($342,239 \text{ km}^2$), Punjab ($50,362 \text{ km}^2$) and Haryana ($45,695 \text{ km}^2$ including the National Capital Territory of Delhi) between August 2002 and October 2008. This region was chosen because the Indian Ministry of Water Resources estimates that groundwater withdrawals in each of the three states exceed recharge² (Fig. 1). Figure 2 maps the averaging function used to retrieve regional TWS time series from the GRACE data.

Rajasthan, Punjab and Haryana are semi-arid to arid, averaging about 50 cm of annual rainfall overall^{15–17}, and encompass the eastern part of the Thar Desert. The 114,000,000 residents of the region have

¹Hydrological Sciences Branch, Code 614.3, NASA Goddard Space Flight Center, Greenbelt, Maryland 20771, USA. ²Department of Earth System Science, University of California, Irvine, California 92697-3100, USA. ³Jet Propulsion Laboratory, California Institute of Technology, Pasadena, California 91109-8099, USA. ⁴Department of Physics, University of Udine, 208 Via delle Scienze, 33100 Udine, Italy.

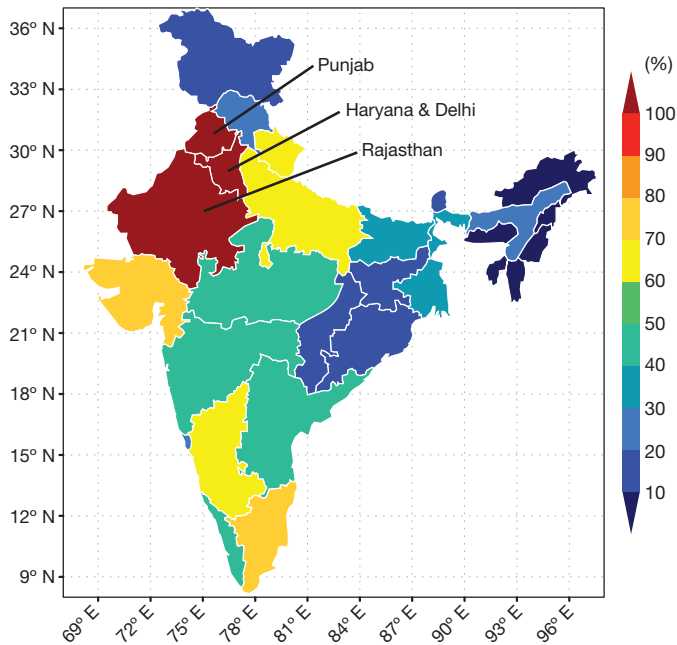


Figure 1 | Groundwater withdrawals as a percentage of recharge. The map is based on state-level estimates of annual withdrawals and recharge reported by the Indian Ministry of Water Resources². The three states studied here are labelled.

benefitted from India's 'green revolution', a massive agricultural expansion fuelled largely by increased production of groundwater for irrigation, which began in the 1960s. Wheat, rice and barley are the major crops. The region is underlain by the Indus River plain aquifer, a 560,000 km² unconfined-to-semiconfined porous alluvial formation that straddles the border between India and Pakistan¹¹.

TWS variations observed by GRACE include the combined contributions of groundwater, soil water, surface water (lakes, rivers, canals and rice paddies), snow, ice and biomass. Interannual variations in biomass have been shown to be well below the detection limits of GRACE¹⁸. The climate of the study region is warm and

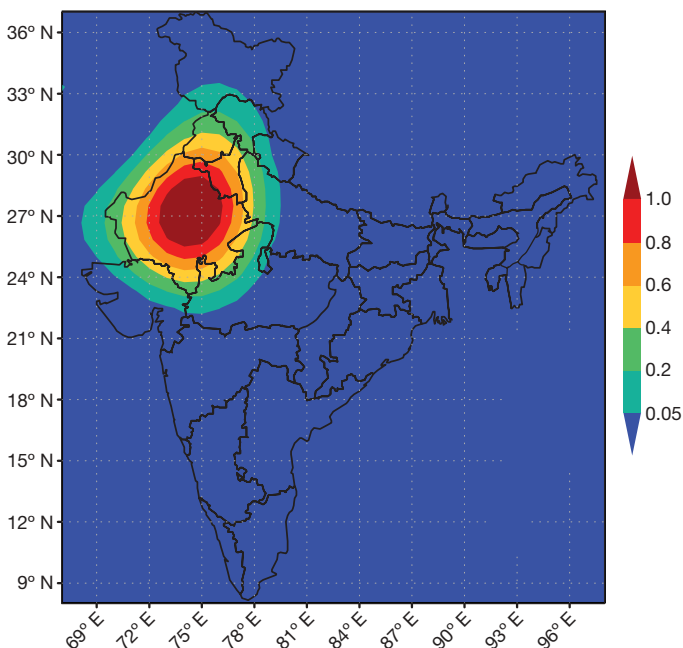


Figure 2 | GRACE averaging function. The unscaled, dimensionless averaging function used to estimate terrestrial water storage changes from GRACE data is mapped.

the terrain shallow; hence, snow is uncommon. However, glaciers abound in the Himalayas, as close as 100 km northeast of Punjab, so we assessed the potential for leakage into our region of the gravity signal associated with non-seasonal glacier melt. We determined that even if 13.4 km³ yr⁻¹ of glacier loss (equal to the estimated rate of melt for all of the Himalayas during 1962–2004¹⁹) occurred along the 150-km stretch of mountains (6% of the Himalayan range) closest to Punjab and Haryana, only 2.8 km³ yr⁻¹ (15% of the estimated TWS trend could be attributed to glacier retreat. We assessed potential leakage from other adjacent trends and included the effects in our error budget.

Surface-water storage also merits consideration. The 203 main reservoirs²⁰ within or on the border of the three states, plus a large salt lake in Rajasthan, occupy a total area of 4,320 km² and have a gross storage capacity of 39.5 km³. On the basis of reservoir storage reports from the Indian Central Water Commission, seven of the largest reservoirs, totalling 34.4 km³ of gross storage capacity, experienced a net increasing trend of 0.5 km³ yr⁻¹ during the study period. The total area of rice paddies in the three states is 38,061 km² (8.7% of the region), but all are seasonally flooded, shallow-water (<1-m) paddies²¹, which dry annually. Hence, if anything, surface-water storage changes probably reduced the rate of TWS depletion observed by GRACE.

Root-zone soil water is often the dominant contributor to TWS variability in temperate regions²². To remove its effect and thus isolate groundwater storage changes, we estimated soil-water storage variations by averaging results from five simulations of the Global Land Data Assimilation System (GLDAS)⁴. These simulations used combinations of three land-surface models and three meteorological-forcing (input) data sets. Total soil-column depths in the models ranged from 200 to 340 cm; thus, they did not account for water storage variations in deep unsaturated soil. However, sub-root-zone soil dries only by gravity drainage or by diffusion to drier layers above. The lack of a drying trend in the root zone (as described below) indicates that deep soil-water storage was likewise stable.

Figure 3 shows the resulting 6-yr time series of monthly groundwater storage anomalies as equivalent heights of water averaged over the three-state region. It compares favourably with the TWS and soil-water time series. Its seasonal cycle (Fig. 3, inset) lags soil water by about 40 d and TWS by about 20 d. The mean peak-to-peak amplitude

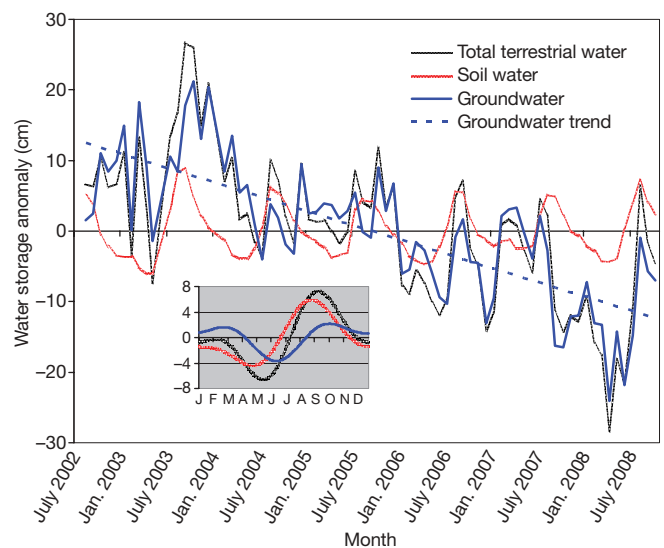


Figure 3 | Monthly time series of water storage anomalies in northwestern India. Monthly time series of anomalies of GRACE-derived total TWS, modelled soil-water storage and estimated groundwater storage, averaged over Rajasthan, Punjab and Haryana, plotted as equivalent heights of water in centimetres. Also shown is the best-fit linear groundwater trend. Inset, mean seasonal cycle of each variable.

is 5.9 cm, compared with 10.3 cm for soil water and 13.8 cm for TWS. These relationships are consistent with those reported in previous studies of soil-water/groundwater covariability^{5,14,22}. The soil-water time series reflects rainfall anomalies during the period (discussed below) and exhibits no significant trend. On the other hand, TWS and groundwater decline steadily from 2003 onwards. We calculate the rate of depletion of groundwater to be $4.0 \pm 1.0 \text{ cm yr}^{-1}$. Assuming² a specific yield of 0.12, the regional mean rate of water table decline would be about 0.33 m yr^{-1} . Local rates of water table decline, which are highly variable, are reported to be as large as 10 m yr^{-1} in certain urban areas (Shajan, B., 'NGOs welcome High Court order on water table' (<http://www.thehindu.com/2004/01/15/stories/2004011509010400.htm>), The Hindu, 15 January 2004). As best can be determined from the coarse GRACE observations, maximum rates of groundwater depletion are centred on Haryana. Groundwater levels also appear to be declining quickly in western Uttar Pradesh, to the east of Haryana. If there is groundwater depletion in Pakistan, to the northwest, it seems to be much less severe.

Although six years is a short period from which to assess a long-term trend with confidence, two pieces of evidence support our conclusion that severe groundwater depletion is occurring as a result of human consumption rather than natural variability. First, the Indian Ministry of Water Resources reports that groundwater withdrawals exceed recharge in the three states we studied². Irrigation accounts for about 95% of the consumption²; about 28% of the area is irrigated²³. Second, there was no shortage of rainfall in the region to cause a natural decline in water storage. For 2002–2008, two observation-based precipitation products^{15,16} and an operational atmospheric analysis product¹⁷ indicated a small positive trend in the region, in the range of $2.5\text{--}5.1 \text{ cm yr}^{-1}$. Relative to the climatological mean, 2002 was a dry year, 2003 and 2008 were wet years and rainfall in the other years was within a few centimetres of normal.

GLDAS modelled soil-water fields integrate the effects of precipitation, solar radiation, air temperature and other meteorological factors that directly or indirectly influence groundwater storage⁴. The trend in simulated soil-water storage during the period of study was 0.4 cm yr^{-1} . This supports the notion that groundwater declines were not caused by natural climate variability. It also confirms that the computed groundwater trend is not a mathematical artefact caused by the subtraction of a large positive soil-water trend from the GRACE-derived TWS trend.

We conclude that withdrawals for irrigation and other uses are depleting the groundwater reserves of Rajasthan, Punjab and Haryana at a rate of $4.0 \pm 1.0 \text{ cm yr}^{-1}$ equivalent height of water, or $17.7 \pm 4.5 \text{ km}^3 \text{ yr}^{-1}$. The Indian Ministry of Water Resources reports that the difference between annual available recharge and annual withdrawals in the region is a $13.2 \text{ km}^3 \text{ yr}^{-1}$ deficit². Our result implies that the portion of irrigated water that replenishes the aquifers is less and/or the rate of withdrawal is more than the Indian government has estimated. Apparently, most of the groundwater withdrawn subsequently is lost from the region as a result of increases in run-off and/or evapotranspiration. Between August 2002 and October 2008, the region lost 109 km^3 of groundwater, which is double the capacity of India's largest reservoir, the Upper Wainganga, and almost triple the capacity of the largest man-made reservoir in the United States, Lake Mead. Depletion is likely to continue until effective measures are taken to curb groundwater demand or until the supply or quality of the resource is diminished to the point at which farmers and residents of the region are forced to react. Severe shortages of potable water, reduced agricultural productivity, conflict and suffering surely would accompany the supply-limited solution.

METHODS SUMMARY

We used 73 monthly GRACE gravity solutions generated by the Center for Space Research at the University of Texas at Austin, consisting of sets of spherical harmonic (Stokes) coefficients, C_{lm} and S_{lm} , to degree l and order m , both

≤ 60 . After removing the temporal mean to obtain gravitational anomalies, we filtered²⁴ each field to reduce noise and converted it to mass in units of equivalent water thickness. We then computed the uncertainty associated with the GRACE measurements^{25,26}.

To compute the groundwater storage time series, we removed GLDAS⁴ estimates of soil-water storage variations from the GRACE TWS¹⁴. For consistency, we applied degree-60 truncation and the same filtering process to the soil-water time series. Uncertainty in the GLDAS modelled soil-water time series was computed as the standard deviation of results from the five contributing simulations²⁷.

We then generated time series of monthly TWS, soil-water and groundwater storage in the study region by applying an averaging kernel (Fig. 2) to the Stokes coefficients. The kernel is spatially smoothed primarily as a consequence of three factors: the truncation of the Stokes coefficients to degree 60, the filtering process and convolution with a Gaussian function. When mass variations inside and outside the region differ, such smoothing causes the amplitude of the retrieved signal to be damped^{26,28}. To offset this effect, we computed and applied a scaling factor of 1.95. We estimated leakage from the surrounding regions using various scenarios to determine all possible impacts. The total uncertainty estimate for the groundwater trend, 1.0 cm yr^{-1} , combines errors associated with the GRACE measurements (0.54 cm yr^{-1}), GLDAS soil water (0.38 cm yr^{-1}), scaling (0.50 cm yr^{-1}) and leakage (0.60 cm yr^{-1}). An expanded description of the methods used is provided in the online Methods.

Full Methods and any associated references are available in the online version of the paper at www.nature.com/nature.

Received 20 February; accepted 14 June 2009.
Published online 12 August 2009.

1. Postel, S. in *Water in Crisis: A Guide to the World's Freshwater Resources* (ed. Gleick, P. H.) 56–66 (Oxford Univ. Press, 1993).
2. Central Ground Water Board. *Dynamic Ground Water Resources of India (as on March 2004)* (Ministry of Water Resources, Government of India, 2006).
3. Tapley, B. D., Bettadpur, S., Ries, J. C., Thompson, P. F. & Watkins, M. M. GRACE measurements of mass variability in the Earth system. *Science* **305**, 503–505 (2004).
4. Rodell, M. *et al.* The Global Land Data Assimilation System. *Bull. Am. Meteorol. Soc.* **85**, 381–394 (2004).
5. Changnon, S. A., Huff, F. A. & Hsu, C. F. Relations between precipitation and shallow groundwater in Illinois. *J. Clim.* **1**, 1239–1250 (1988).
6. Sturchio, N. C. *et al.* One million year old groundwater in the Sahara revealed by krypton-81 and chlorine-36. *Geophys. Res. Lett.* **31**, L05503 (2004).
7. Livingston, M. L. & Garrido, A. Entering the policy debate: an economic evaluation of groundwater policy in flux. *Wat. Resour. Res.* **40**, doi:10.1029/2003WR002737 (2004).
8. Kumar, R., Singh, R. D. & Sharma, K. D. Water resources of India. *Curr. Sci.* **89**, 794–811 (2005).
9. Briscoe, J. *India's Water Economy: Bracing for a Turbulent Future*. Report No. 34750-IN, viii–xi (World Bank, 2005).
10. Mall, R. K., Gupta, A., Singh, R., Singh, R. S. & Rathore, L. S. Water resources and climate change: an Indian perspective. *Curr. Sci.* **90**, 1610–1626 (2006).
11. Zaisheng, H., Hao, W. & Rui, C. *Transboundary Aquifers in Asia with Special Emphasis to China* 10–18 (United Nations Educational, Scientific and Cultural Organization, 2006).
12. Ministry of Water Resources, Government of India. *Central Ground Water Authority* (http://cgwb.gov.in/GroundWater/gw_regulation.htm) (2009).
13. Yeh, P. J.-F., Swenson, S. C., Famiglietti, J. S. & Rodell, M. Remote sensing of groundwater storage changes in Illinois using the Gravity Recovery and Climate Experiment (GRACE). *Wat. Resour. Res.* **42**, doi:10.1029/2006WR005374 (2006).
14. Rodell, M. *et al.* Estimating ground water storage changes in the Mississippi River basin (USA) using GRACE. *Hydrogeol. J.* **15**, doi:10.1007/s10040-006-0103-7 (2007).
15. Huffman, G. J. *et al.* The TRMM Multisatellite Precipitation Analysis (TMPA): quasi-global, multiyear, combined-sensor precipitation estimates at fine scales. *J. Hydrometeorol.* **8**, 38–55 (2007).
16. Xie, P. P. & Arkin, P. A. Global precipitation: a 17-year monthly analysis based on gauge observations, satellite estimates, and numerical model outputs. *Bull. Am. Meteorol. Soc.* **78**, 2539–2558 (1997).
17. Persson, A. *User Guide to ECMWF Forecast Products*. Meteorological Bulletin M3.2 (European Centre for Medium-Range Weather Forecasts, 2001).
18. Rodell, M., Chao, B. F., Au, A. Y., Kimball, J. & McDonald, K. Global biomass variation and its geodynamic effects, 1982–1998. *Earth Interact.* **9**, 1–19 (2005).
19. Dyurgerov, M. B. & Meier, M. F. *Glaciers and the Changing Earth System: A 2004 Snapshot*. Occasional Paper No. 58 (Institute of Arctic and Alpine Research, University of Colorado, 2005).
20. Central Water Commission, Government of India. *National Register of Large Dams – 2002* (Government of India, 2002).
21. Frohling, S., Yeluripati, J. B. & Douglas, E. New district-level maps of rice cropping in India: a foundation for scientific input into policy. *Field Crops Res.* **98**, doi:10.1016/j.fcr.2006.01.004 (2006).

22. Rodell, M. & Famiglietti, J. S. An analysis of terrestrial water storage variations in Illinois with implications for the Gravity Recovery and Climate Experiment (GRACE). *Wat. Resour. Res.* **37**, 1327–1340 (2001).
23. Siebert, S. *et al.* Development and validation of the global map of irrigation areas. *Hydrol. Earth Syst. Sci.* **9**, 535–547 (2005).
24. Swenson, S. & Wahr, J. Post-processing removal of correlated errors in GRACE data. *Geophys. Res. Lett.* **33**, doi:10.1029/2005GL025285 (2006).
25. Wahr, J., Swenson, S. & Velicogna, I. The accuracy of GRACE mass estimates. *Geophys. Res. Lett.* **33**, doi:10.1029/2005GL025305 (2006).
26. Swenson, S., & Wahr, J. Multi-sensor analysis of water storage variations of the Caspian Sea. *Geophys. Res. Lett.* **34**, doi:10.1029/2007GL030733 (2007).
27. Kato, H. *et al.* Sensitivity of land surface simulations to model physics, land characteristics, and forcings, at four CEOP Sites. *J. Meteorol. Soc. Jpn* **87A**, 187–204 (2007).
28. Velicogna, I. & Wahr, J. Acceleration of Greenland ice mass loss in spring 2004. *Nature* **443**, 329–331 (2006).

Acknowledgements We thank H. K. Beaudoin for assistance in preparing the GLDAS time series. This research was funded by grants from NASA's Solid Earth and Natural Hazards Program, Terrestrial Hydrology Program and Cryospheric Science Program.

Author Contributions M.R. and J.S.F. performed background research and designed the study. I.V. led the GRACE data analysis. M.R. and I.V. wrote the manuscript and prepared the figures. All authors discussed the results and commented on the manuscript.

Author Information The GRACE data used here were produced by the Center for Space Research, University of Texas at Austin, and are available from the NASA Jet Propulsion Laboratory Physical Oceanography Distributed Active Archive Center (<http://podaac.jpl.nasa.gov/index.html>). GLDAS data are available from the Goddard Earth Sciences Data and Information Services Center (<http://disc.gsfc.nasa.gov/hydrology>). Reprints and permissions information is available at www.nature.com/reprints. Correspondence and requests for materials should be addressed to M.R. (matthew.rodell@nasa.gov).

METHODS

We used 73 monthly GRACE gravity field solutions generated by the Center for Space Research at the University of Texas at Austin³. Each monthly gravity field consisted of a set of spherical harmonic (Stokes) coefficients, C_{lm} and S_{lm} to degree l and order m , both ≤ 60 . The C_{20} coefficients showed unreasonable variability, so we replaced them with values derived from satellite laser ranging²⁹. After removing the temporal mean to obtain gravitational anomalies, we filtered²⁴ each monthly field to reduce noise ('striping') and converted it to mass in units of equivalent water thickness.

We corrected the GRACE mass anomalies for the solid-Earth contributions generated by the high-latitude Pleistocene deglaciation using an independent model³⁰. However, the contribution was negligible in this analysis.

We used GLDAS⁴ time series of soil-water storage to isolate groundwater storage variations from the GRACE TWS anomalies¹⁴. For consistency, before we calculated Stokes coefficients for the soil water storage we truncated them to degree 60 and applied the same filtering process as used for the GRACE fields.

We used the filtered, monthly coefficients to generate time series for TWS, soil water and groundwater storage in the study region. To do this we constructed an averaging kernel by convolving a Gaussian function with a gridded map of the combined area of Punjab, Haryana (including Delhi) and Rajasthan (438,296 km²). After testing various radii for the Gaussian function, from 300 km to 0 km, we selected an exact (0-km) averaging function (that is, no Gaussian averaging) because it minimized uncertainty and was generally best suited for our region (see below).

We applied the kernel to the Stokes coefficients to estimate mass changes averaged over the region. Ideally, the kernel should take the value 1 within a study region and 0 outside. In practice, the kernel is smoothed as a consequence of three factors: the truncation to degree 60 (the maximum degree for the GRACE Stokes coefficients), the filtering process and the convolution with the Gaussian function. Such smoothing causes an amplitude damping of the recovered mass. To obtain a realistic estimate of the mass changes, the damping of the signal amplitude caused by smoothing must be mitigated^{26,28}. Also, we must account for potential leakage of mass changes from adjacent regions. In particular, the leakage effects may or may not be significant. In cases where mass changes are uniform across the region's boundaries, bias is minimal^{25,26} and the signal recovered using the averaging kernel does not need to be rescaled because the smoothing effects are compensated by leakage of identical variations from the outside regions. However, if mass variability immediately outside the region is uncorrelated with that inside or they are negatively correlated or have different amplitudes, the recovered signal will be biased²⁸. This must be evaluated on a case-by-case basis. We determined, on the basis of the GLDAS soil-water fields and the GRACE fields, that seasonal variations in TWS inside and outside the region are well correlated. In fact, the exact average of the GLDAS soil water over the study region and the average calculated when applying the truncation, filtering and Gaussian averaging differed only by few per cent.

On the other hand, the secular change (trend) varies between the inside and the outside of the study region, with the negative anomaly mainly concentrated inside the region. Therefore, to recover the total mass trend we rescaled the time series to account for amplitude damping^{26,28}. The scaling factor was estimated by distributing a synthetic mass-change signal uniformly over the study region, processing it in the same manner as the GRACE data (that is, converting it to the spectral domain, truncating it to degree 60 and filtering and spatially averaging it) and comparing the retrieved signal with the original synthetic signal. We then multiplied the GRACE time series trend by this factor, which was determined to be 1.95. The scaling depends on how mass change is distributed within the region; therefore, to account for the uncertainty associated with our representation of that distribution, we calculated the sensitivity to different mass-change distributions within the region. We found that mass distribution effects caused an uncertainty of 0.5 cm yr^{-1} , which we included in our final error budget.

We also evaluated the leakage from mass-change signals in the surrounding regions. To estimate the leakage from mass loss associated with non-seasonal

Himalayan glacier melt, we distributed a trend of $13.4 \text{ km}^3 \text{ yr}^{-1}$, equal to the estimated rate of melt for all of the Himalayas during 1962–2004¹⁹, along the 150-km stretch of glaciers closest to Punjab and Haryana, and applied our averaging function and scaling. This is a highly conservative approach, given that 150 km is only 6% of the length of the mountain range. The portion of that signal that leaked into our region was $2.8 \text{ km}^3 \text{ yr}^{-1}$, or about 15% of the estimated groundwater trend. Because that is almost surely a significant over-estimate, we did not use it to adjust the estimated groundwater trend, but continued with a more careful analysis of leakage effects. In that analysis, we included leakage from all TWS trends in the surrounding region that were detected by GRACE. We investigated different leakage scenarios to determine all possible effects on our final estimate. In the most likely scenario, the leakage effects nearly cancel. Nevertheless, uncertainty due to leakage was estimated to be 0.6 cm yr^{-1} , which is included in the final error budget.

The decision to use an exact (radius, $R = 0 \text{ km}$) Gaussian function was based on the following reasoning. We first evaluated the effects of filtering in the studied region by comparing trend maps obtained by applying 300-, 250-, 200-, 150-, 100-, 50- and 0-km Gaussian averaging. Even if $R = 0 \text{ km}$ and there is no Gaussian smoothing, the resulting map will still be smoothed as a consequence of the necessary truncation of the GRACE solutions to degree 60. We found that the seven smoothing radii produced insignificant differences in our region; thus, none of them was eliminated from consideration.

We constructed seven different averaging kernels by convolving Gaussian functions for each of the seven radii with a gridded map of the region of interest. We calculated TWS time series using the seven kernels, and we estimated the corresponding scaling factors and measurement errors. Both the scaling factor and the error are a function of the specific kernel (note that in the case of $R = 0 \text{ km}$, use of the scaling factor is necessitated only by the truncation to degree 60 and filtering of the GRACE solutions). For example, the averaging kernel produced by convolving a Gaussian function with $R = 250 \text{ km}$ with a gridded map will deliver results that are more smoothed than in the case in which $R = 200 \text{ km}$ (that is, the associated scaling factor will be larger for $R = 250 \text{ km}$ than for $R = 200 \text{ km}$) but will have smaller measurements errors.

A priori, we did not know which would be the best averaging function because of this trade-off between smoothing and errors. Also, it is possible for the net effect of striping to nearly cancel itself out, depending on the specific location. We compared the TWS time series, scaling factor and errors for each of the seven averaging functions and found that the GRACE measurement errors (defined by the scatter of the monthly values about their seasonal cycle) were not significantly larger in the case of $R = 0 \text{ km}$ than in the case of any of the greater radii (again, truncation to degree 60 produces some smoothing, even in the case of $R = 0 \text{ km}$).

Uncertainties in the Stokes coefficients were determined by assuming that the scatter of the monthly values about their seasonal cycle is due entirely to errors²⁵. This represents the upper bound on the random component of the error. The estimate is conservative, because intra-annual variations in the signal will be interpreted as error. The 1σ error estimates in the spatially averaged GRACE time series were then calculated from the uncertainty in the individual Stokes coefficients²⁶. The scaled root-mean-squared error in the trend is 0.54 cm yr^{-1} .

Uncertainty in the GLDAS modelled soil-water time series was computed as the standard deviation of results from the five contributing simulations²⁷. This calculation was done separately for the seasonal and secular components. The uncertainty in each monthly soil-water estimate for the study region is 1.71 cm and uncertainty in the trend is 0.38 cm yr^{-1} . The total error estimate for the ground water trend, 1.0 cm yr^{-1} , combines the GRACE measurement errors, the GLDAS error, the scaling error and the leakage error, under the assumption that the individual errors are uncorrelated.

29. Cheng, M. K. & Tapley, B. D. Variations in the Earth's oblateness during the past 28 years. *J. Geophys. Res.* **109**, B09402 (2004).

30. Paulson, A., Zhong, S. & Wahr, J. Inference of mantle viscosity from GRACE and relative sea level data. *Geophys. J. Int.* **171**, 497–508 (2006).