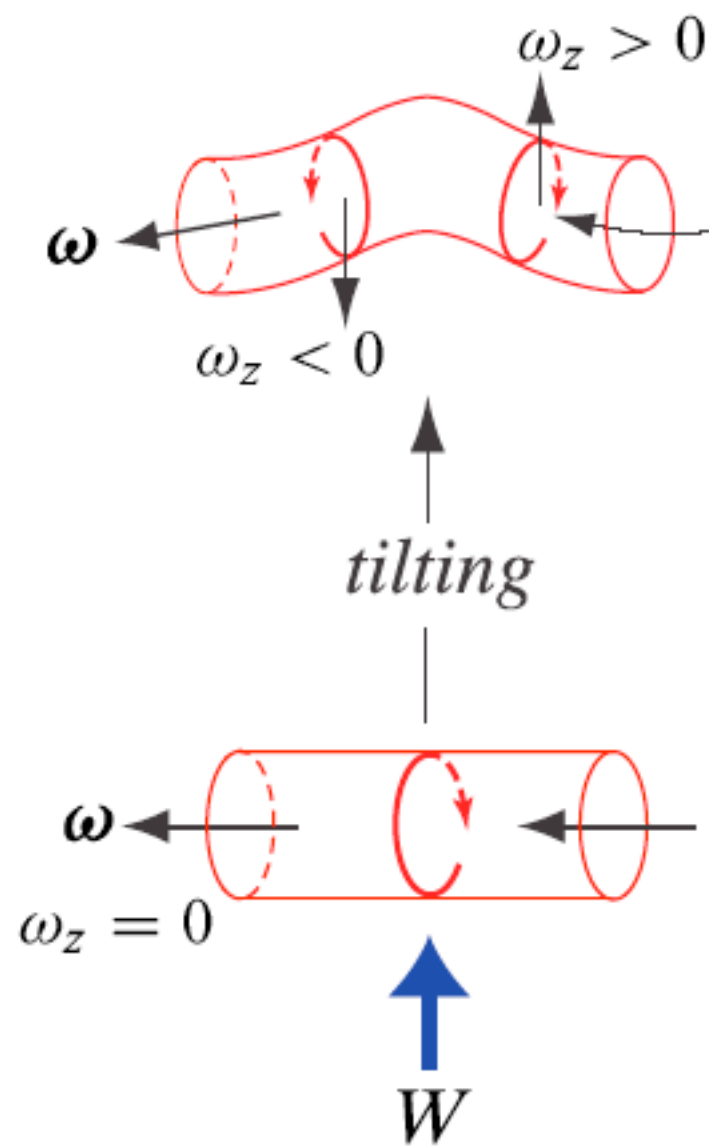
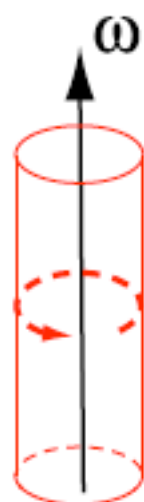
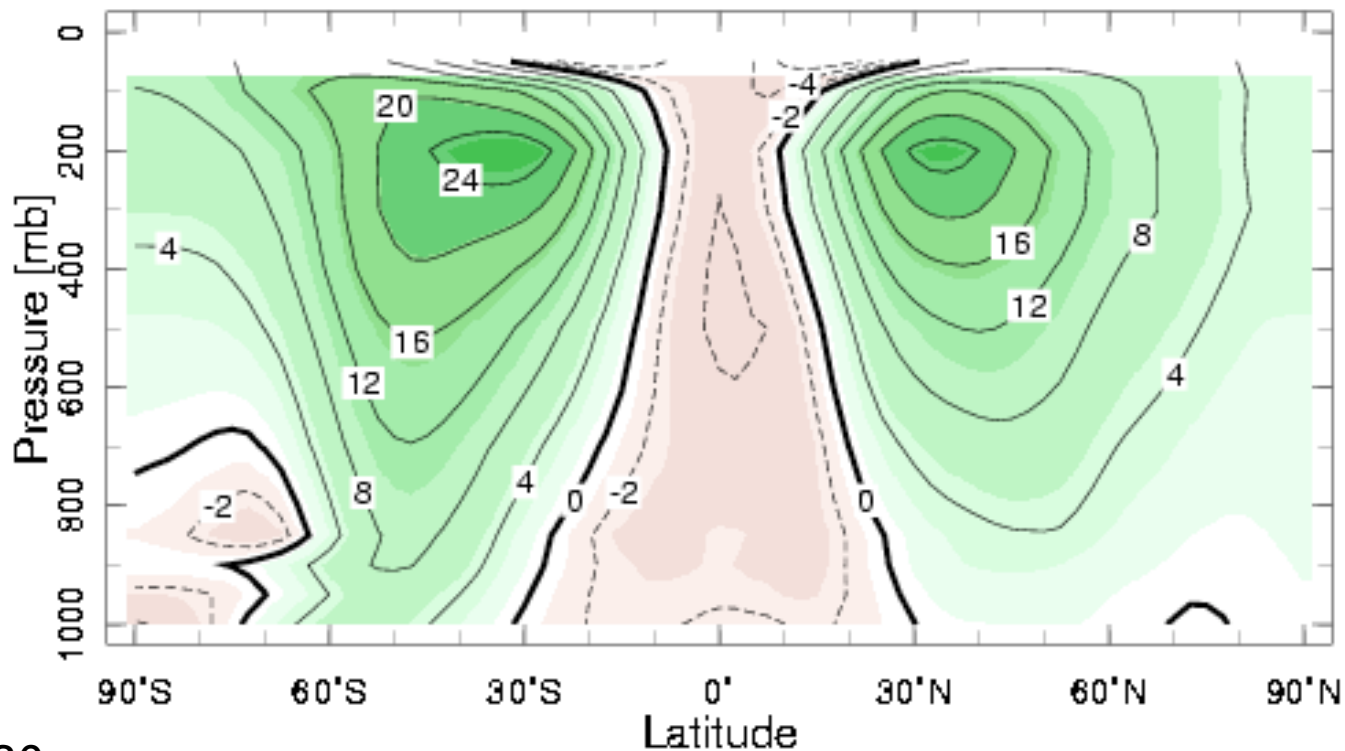


— *stretching* —→

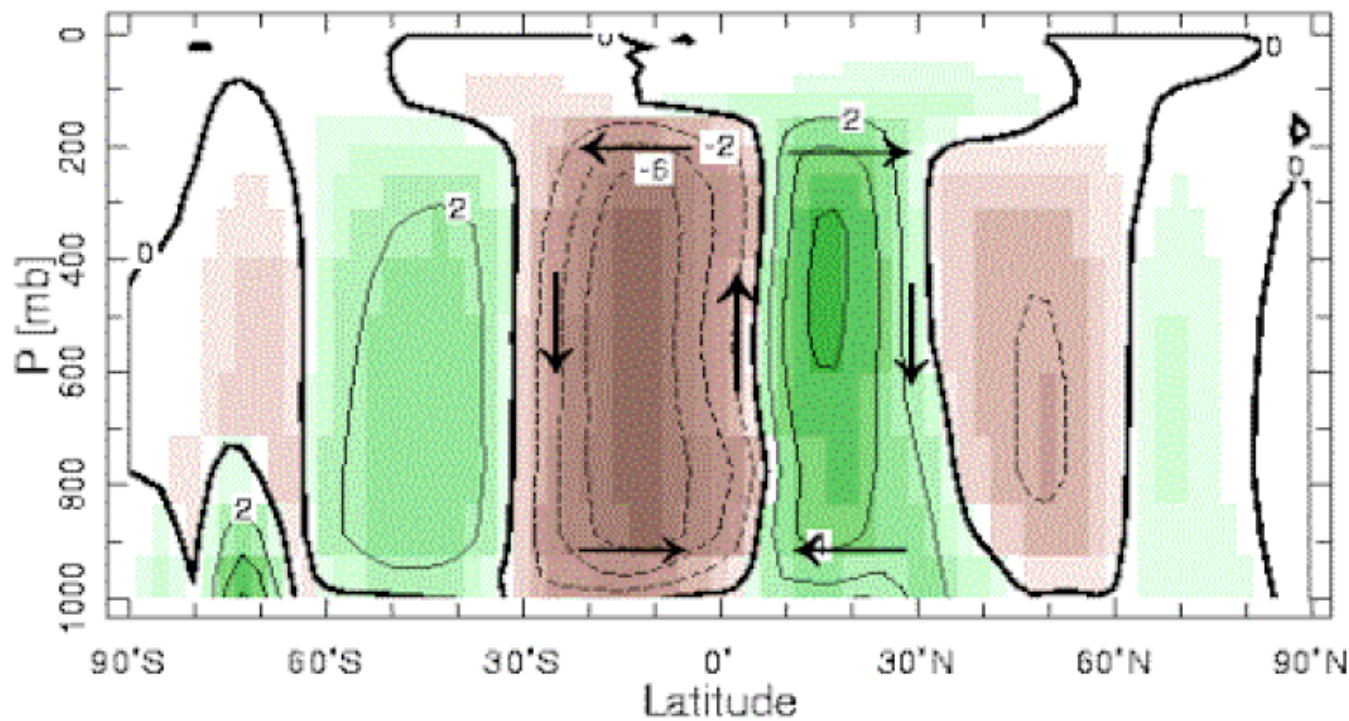


annual-mean
zonal-mean
zonal
wind
(m/s)



MARSHALL PLUMB Fig 5.20
5.21

annual-mean
zonal-mean
meridional
wind
(m/s)



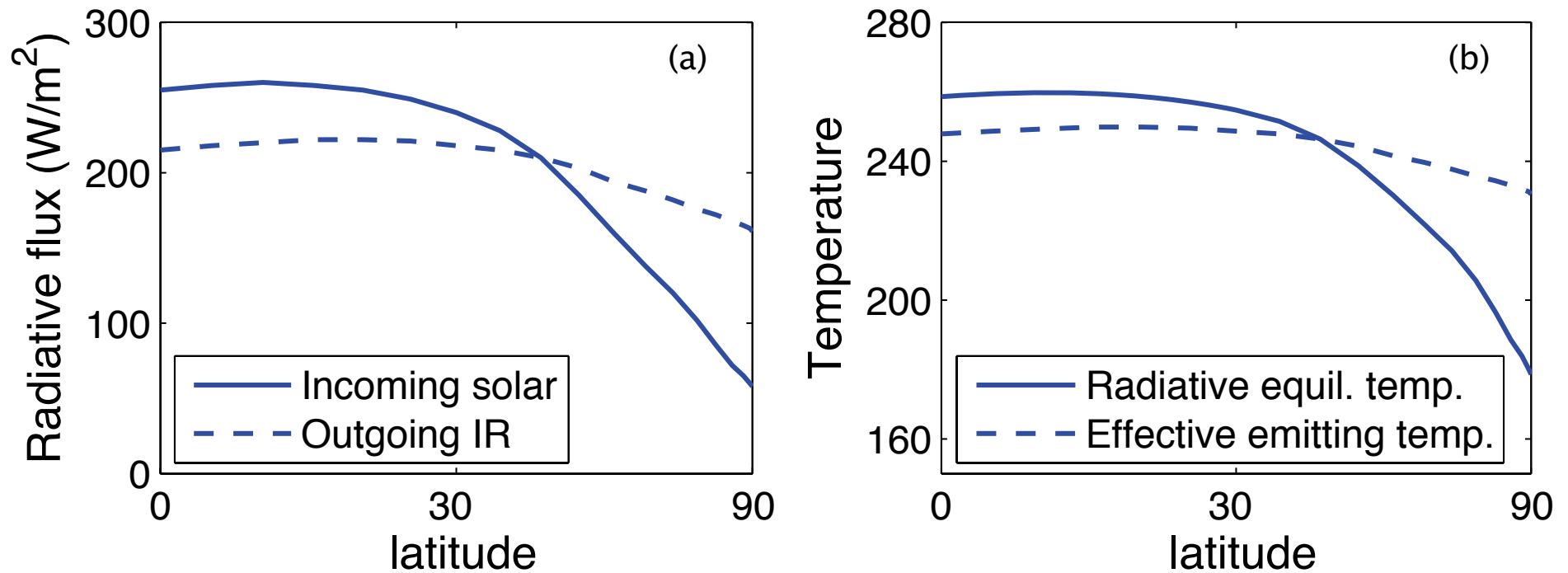


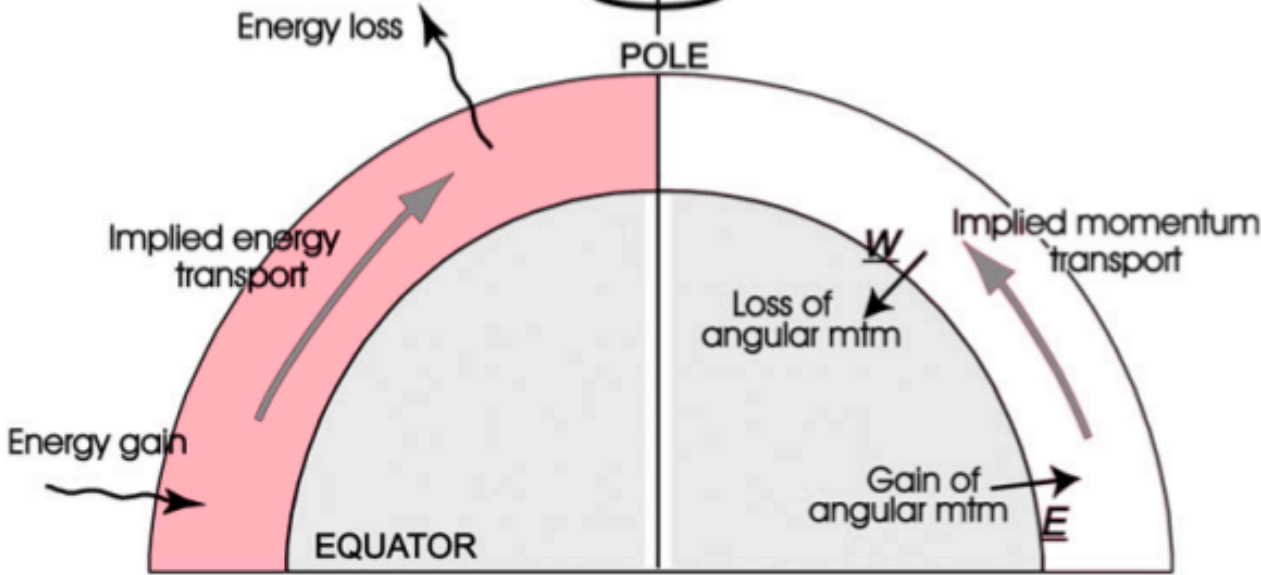
Fig. 11.1 (a) The (approximate) observed net average incoming solar radiation and outgoing infrared radiation at the top of the atmosphere, as a function of latitude (plotted on a sine scale). (b) The temperatures associated with these fluxes, calculated using $T = (R/\sigma)^{1/4}$, where R is the solar flux for the radiative equilibrium temperature and R is the infrared flux for the effective emitting temperature. Thus, the solid line is an approximate radiative equilibrium temperature

From Vallis (2006)

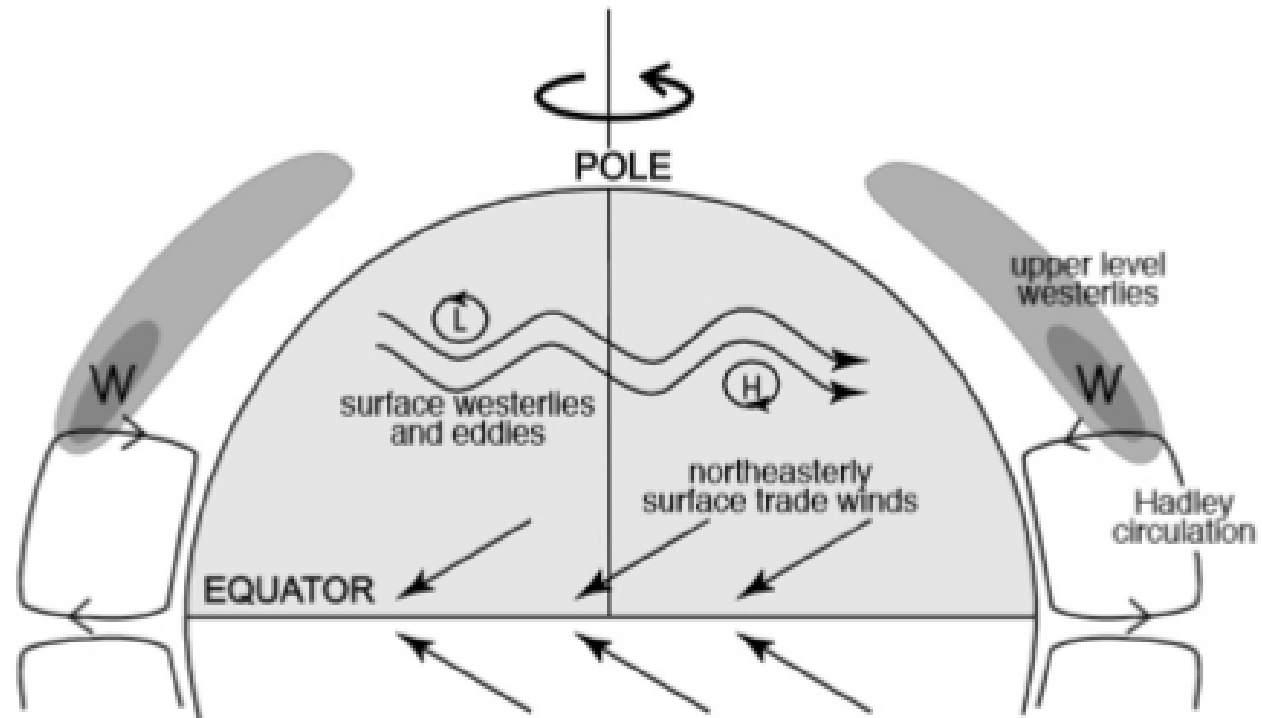
Energy Budget

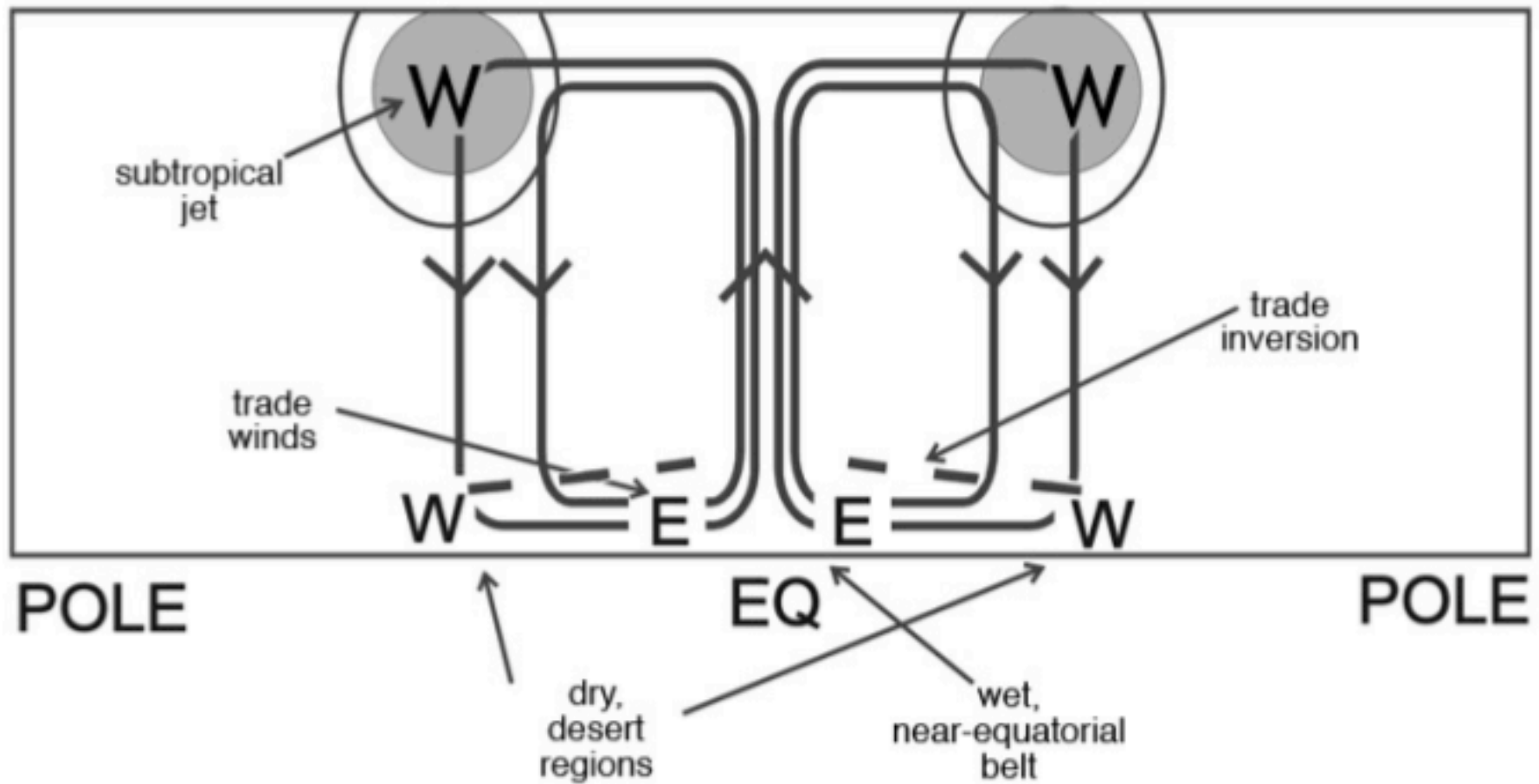
Angular Momentum Budget

MARSHALL PLUMB Fig 8.1

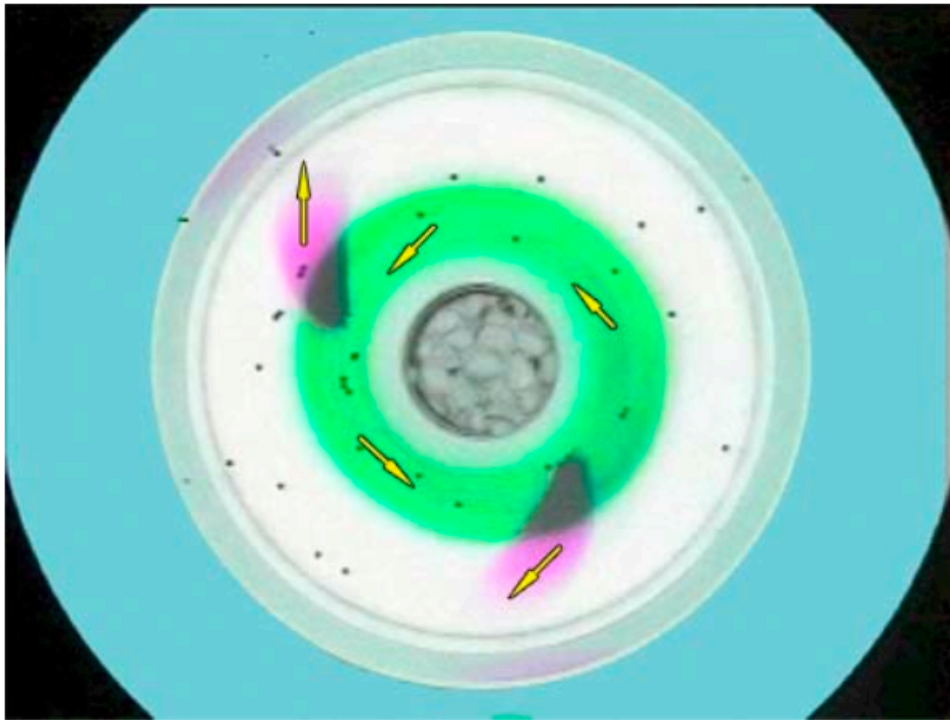


MARSHALL PLUMB Fig 8.2





MARSHALL PLUMB Fig 8.5



MARSHALL PLUMB Fig 8.6



MARSHALL PLUMB Fig 8.7